

data perusahaan

corporate data





dewan komisaris

board of commissioners



Bambang Irawan Hendradi

Presiden Komisaris
President Commissioner

Lahir di Semarang, Jawa Tengah, 15 Januari 1951. Beliau menjabat sebagai Presiden Komisaris Bakrieland sejak 2002. Saat ini beliau juga menjabat sebagai Direktur Utama PT Bakrie Capital Indonesia, Direktur Utama PT Djarot, dan Direktur Keuangan PT Pillar Abhimantra. Sebelumnya beliau pernah menjabat sebagai Komisaris PT Bumi Resources Tbk, Komisaris PT Bakrie Finance Corporation, Direktur Utama Bakrieland, Managing Director PT Catur Swasakti Utama, dan Direktur PT Sanggraha Pelita Jaya. Beliau meraih gelar Sarjana Teknik Sipil dari Universitas Trisakti, Jakarta, 1977, serta lulus dari Technishe Hoge Scholl, Delft, Belanda, 1981.

Born in Semarang, Central Java, 15 January 1951. He has been the President Commissioner of Bakrieland since 2002. Currently he is also in charge as President Director of PT Bakrie Capital Indonesia, President Director of PT Djarot, and Finance Director at PT Pillar Abhimantra. Previously he was in charge as Commissioner of PT Bumi Resources Tbk, Commissioner of PT Bakrie Finance Corporation, President Director of Bakrieland, Managing Director of PT Catur Swasakti Utama, and Director of PT Sanggraha Pelita Jaya. He holds a Sarjana degree in Civil Engineering from Universitas Trisakti, Jakarta, 1977, and also graduated from Technishe Hoge Scholl, Delft, The Netherlands, 1981.



Lukman Purnomosidi

Komisaris Independen
Independent Commissioner

Lahir di Gresik, Jawa Timur, 7 Januari 1959. Beliau menjabat sebagai Komisaris Independen Bakrieland sejak tahun 2001. Saat ini beliau masih menjabat sebagai Direktur Utama PT Jaringan Selera Asia, Komisaris PT Laksayudha Abadi, Direktur Utama PT Bintang Mitra Semesta Raya Tbk, dan Direktur Utama PT Bagasasi Konstruksindo. Sebelumnya beliau pernah menjabat sebagai Manajer Divisi Realti & Properti PT Wijaya Karya (Persero). Beliau meraih gelar Sarjana Teknik Sipil dari Institut Teknologi Bandung, 1983 dan meraih gelar MBA dari Sekolah Tinggi Manajemen LPPM Jakarta, 1986, serta pada tahun 2000 beliau mengikuti pendidikan Lemhanas Jakarta KRA XXXIII.

Born in Gresik, East Java, 7 January 1959. He has been an Independent Commissioner of Bakrieland since 2001. Currently, he is also in charge as President Director of PT Jaringan Selera Asia, Commissioner of PT Laksayudha Abadi, President Director of PT Bintang Mitra Semesta Raya Tbk, and President Director of PT Bagasasi Konstruksindo. Previously, he was a Division Manager of Realty and Property at PT Wijaya Karya (Persero). He holds a Sarjana degree in Civil Engineering from Institut Teknologi Bandung, 1983 and holds an MBA degree from LPPM management School in Jakarta, 1986. In 2000, he was involved in an educational program with Lemhanas Jakarta KRA XXXIII.



Supartono
Komisaris
Commissioner

Lahir di Jakarta, 31 Oktober 1953. Beliau menjabat sebagai Komisaris Bakrieland sejak April 2007. Saat ini beliau juga menjabat sebagai Treasury Advisor PT Energi Mega Persada Tbk, Direktur PT Puri Dewi Canggü, Presiden Komisaris PT MRE Utama, dan Direktur PT Kondur Indonesia. Sebelumnya beliau pernah menjabat sebagai Direktur PT Marathon Murti International dan Komisaris PT Mitraguna Intiga. Beliau lulus dari Goethe Institute Aroslen West Deutschland, Jerman, 1972, VW Wolsburg West Deutschland, Jerman, 1976, dan Program Extension Management dari Universitas Indonesia, 1979.

Born in Jakarta on 31 October 1953. He has been a Commissioner of Bakrieland since April 2007. Currently, he is also in charge as Treasury Advisor of PT Energi Mega Persada Tbk, Director of PT Puri Dewi Canggü, President Commissioner of PT MRE Utama, and Director of PT Kondur Indonesia. Previously, he was Director of PT Marathon Murti International and Commissioner of PT Mitraguna Intiga. He graduated from Goethe Institute Aroslen West Deutschland, Germany, 1972, and VW Wolsburg West Deutschland, Germany, 1976, as well as an Extension Management Program from Universitas Indonesia, 1979.



Edgardo Bautista
Komisaris
Commissioner

Lahir di Manila, Filipina, 15 Mei 1935. Beliau menjabat sebagai Komisaris Bakrieland sejak April 2007. Saat ini beliau juga menjabat sebagai Executive Director, Head of Asia Infrastructure Business, Avenue Asia Investments Management, LLC. Sebelumnya beliau pernah menjabat sebagai President dan CEO Hopewell Energy Philippines Corporation, President dan CEO Mirant Philippines Corporation, dan Vice Chairman Mirant Philippines Corporation. Beliau meraih gelar Bachelor of Science di bidang Teknik Mesin dari De La Salle College, Manila. Pada tahun 1958-1960, beliau mengikuti General Electric's Two Year Technical & Management Program for International Graduate Engineers, dan mengikuti Advanced Management Program, yang diadakan oleh Harvard Business School.

Born in Manila, the Philippines, 15 May 1935. He has been a Commissioner of Bakrieland since April 2007. Currently, he is also in charge as Executive Director, Head of Asia Infrastructure Business, Avenue Asia Investments Management, LLC. Previously, he was in charge as President and CEO of Hopewell Energy Philippines Corporation, President and CEO of Mirant Philippines Corporation, and Vice Chairman of Mirant Philippines Corporation. He holds a Bachelor of Science degree in Mechanical Engineering from De La Salle College, Manila. In 1958-1960, he participated in General Electric's Two Year Technical & Management Program for International Graduate Engineers, and joined Advanced Management Program, held by Harvard Business School.

direksi

board of directors



Hiramsoyah Sambudhy Thalb

Presiden Direktur & CEO
President Director & CEO

Lahir di Jakarta, 7 Mei 1962. Beliau menjabat sebagai Presiden Direktur & CEO Bakrieland sejak April 2007. Sebelumnya beliau pernah menduduki berbagai posisi sebagai CEO PT Bakrie Capital Indonesia, Komisaris Bakrieland, Presiden Direktur Bank Tabungan Pensiunan Nasional, Presiden Komisaris PT Bank Tabungan Pensiunan Nasional, Presiden Direktur & CEO PT Bakrie Nirwana Resort, dan Vice President Bakrieland. Beliau juga pernah menjabat sebagai Senior Business Manager Regional Commercial Banking Area 1 di PT Bank Niaga Tbk. Beliau meraih gelar Sarjana Teknik dari Institut Teknologi Bandung, 1989.

Born in Jakarta, 7 May 1962. He has been in charge as the President Director & CEO of Bakrieland since April 2007. Previously he served as CEO of PT Bakrie Capital Indonesia, Commissioner of Bakrieland, President Director of PT Bank Tabungan Pensiunan Nasional, President Commissioner of PT Bank Tabungan Pensiunan Nasional, President Director & CEO of PT Bakrie Nirwana Resort, and Vice President of Bakrieland. He also served as the Senior Business Manager Regional Commercial Banking Area 1 of PT Bank Niaga Tbk. He holds a Sarjana degree in Engineering from Institut Teknologi Bandung, 1989.



Marudi Surachman

Direktur
Director

Lahir di Bandung, Jawa Barat, 19 Januari 1959. Beliau menjabat sebagai Direktur Bakrieland sejak April 2007. Saat ini beliau juga menjabat sebagai Direktur Utama PT Krakatau Lampung Tourism Development, Direktur PT Bakrie Nirwana Semesta, Direktur Utama PT Samudra Asia Nasional, Direktur PT Libratindo Gemilang dan Direktur PT Berkah Puhu Lestari. Sebelumnya beliau pernah menjabat sebagai Presiden Direktur Bakrieland, Direktur Utama PT Graha Andrasentra Propertindo, Direktur Pengembangan PT Graha Andrasentra Propertindo, PT Sanggraha Pelita Sentosa, PT Elangperkasa Pratama, dan PT Puri Diamond Pratama. Beliau meraih gelar Sarjana Teknik Arsitektur dari Institut Teknologi Bandung, 1983, dan meraih gelar M.Arch dari Southern California Institute of Architecture, Los Angeles - California, USA, 1987.

Born in Bandung, West Java, 19 January 1959. He has been in charge as Director of Bakrieland since April 2007. Currently he also serves as President Director of PT Krakatau Lampung Tourism Development, President Director of PT Samudra Asia Nasional, and Development Director of PT Graha Intan Bali. Previously he served as President Director of Bakrieland, President Director of PT Graha Andrasentra Propertindo, Development Director of PT Graha Andrasentra Propertindo, PT Sanggraha Pelita Sentosa, PT Elangperkasa Pratama, and PT Puri Diamond Pratama. He holds a Sarjana degree in Architecture from Institut Teknologi Bandung, 1993, and an M. Arch degree from Southern California Institute of Architecture, Los Angeles - California, USA, 1987.



Hamid Mundzir
Direktur
Director

Lahir di Bandung, Jawa Barat, 14 Nopember 1961. Beliau menjabat sebagai Direktur Bakrieland sejak 2002. Saat ini beliau juga menjabat sebagai Direktur PT Graha Andrasentra Propertindo, Direktur PT Mutiara Permata Biru, Direktur Utama PT Dutaperkasa Unggullestari, Direktur Utama PT Sanggraha Pelita Sentosa, dan Direktur Utama PT Citra Saudara Abadi. Memulai karir sebagai Akuntan Publik di KAP DR Moehtar Thalib, beliau pernah menjabat sebagai Presiden Direktur PT Sanggraha Pelita Duta Sentosa dan PT Sanggraha Pelita Development Services. Beliau meraih gelar Sarjana Ekonomi dari Universitas Padjajaran, Bandung, 1984.

Born in Bandung, West Java, 14 November 1961. He has been in charge as Director of Bakrieland since 2002. Currently he also serves as Director of PT Graha Andrasentra Propertindo, Director of PT Mutiara Permata Biru, President Director of PT Dutaperkasa Unggullestari, President Director of PT Sanggraha Pelita Sentosa, and President Director of PT Citra Saudara Abadi. Began his career as a Public Accountant at KAP DR Moehtar Thalib, he previously served as President Director of PT Sanggraha Pelita Duta Sentosa and PT Sanggraha Pelita Development Services. He holds a Sarjana degree in Economics from Universitas Padjajaran, Bandung, 1984.



Sri Hascaryo
Direktur
Director

Lahir di Yogyakarta, 8 Oktober 1963. Beliau menjabat sebagai Direktur Bakrieland sejak 2002. Saat ini beliau juga menjabat sebagai Direktur Utama PT Bakrie Swasakti Utama, Direktur PT Sanggraha Pelita Sentosa dan Direktur PT Citra Saudara Abadi. Sebelumnya beliau pernah menjabat sebagai Komisaris Utama PT Bank Tabungan Pensiunan Nasional, Direktur PT Graha Intan Bali, Komisaris Utama PT Dinamika Nusantara Bestari, CFO dan Direktur PT Graha Andrasentra Propertindo. Beliau meraih gelar Sarjana Ekonomi dari Universitas Islam Indonesia, Yogyakarta, 1989 dan juga gelar Sarjana Hukum dari Universitas Gajah Mada, Yogyakarta, 1990.

Born in Yogyakarta, 8 October 1963. He has been in charge as Director of Bakrieland since 2002. Currently he also serves as President Director of PT Bakrie Swasakti Utama, Director of PT Sanggraha Pelita Sentosa, and Director of PT Citra Saudara Abadi. Previously he served as President Commissioner of PT Bank Tabungan Pensiunan Nasional, Director of PT Graha Intan Bali, President Commissioner of PT Dinamika Nusantara Bestari, and CFO & Director of PT Graha Andrasentra Propertindo. He holds a Sarjana degree in Economics from Universitas Islam Indonesia, Yogyakarta, 1989 and also a Sarjana degree in Law from Universitas Gajah Mada, Yogyakarta, 1990.

komite audit

audit committee



Lukman Purnomosidi
Ketua
Chairman

Catatan: Keterangan CV dapat dilihat di halaman 108
Note: CV can be seen on page 108



Soekendar
Anggota
Member

Lahir di Yogyakarta, Jawa Tengah, 23 Juli 1953. Beliau menjabat sebagai anggota Komite Audit Bakrieland sejak 2002. Beliau juga menjabat sebagai Direktur Keuangan Bakrie School of Management sejak 2006. Saat ini beliau juga menjabat sebagai Komisaris PT Asuransi Jiwa Bakrie. Sebelumnya beliau pernah menjabat sebagai Direktur PT Dinamika Nusantara Bestari (Property Management), Direktur PT Dinamika Prima Utama dan PT Inti Dinamika Nusantara, Direktur Kredit PT Bank Nasional Kantor Pusat Jakarta. Beliau meraih gelar Sarjana Ekonomi jurusan Akuntansi dari Universitas Gajah Mada, 1978.

Born in Yogyakarta, Central Java, 23 July 1959. He has been a member of Bakrieland's Audit Committee since 2002. Currently he serves as the Financial Director of Bakrie School of Management, and he is also as Commissioner of PT Asuransi Jiwa Bakrie. Previously, he was the Director of PT Dinamika Nusantara Bestari, PT Dinamika Prima Utama and Director PT Bank Nasional Jakarta Head Office. He holds a Sarjana degree in Economics majoring in Accounting from Universitas Gajah Mada, 1978.



Kanaka Puradiredja
Anggota
Member

Beliau menjabat sebagai anggota Komite Audit Bakrieland sejak 2007. Berpengalaman lebih dari 30 tahun sebagai Akuntan Publik. Mantan Managing Partner dan Chairman KPMG Indonesia dan mantan Senior Partner KAP Kanaka Puradiredja, Robert Yogi, Suhartono. Saat ini beliau juga menjabat sebagai Ketua Majelis Kehormatan Ikatan Akuntan Indonesia, Ketua Dewan Pengurus Transparansi Internasional Indonesia dan anggota Komite Audit di berbagai perusahaan publik. Lulusan Fakultas Ekonomi jurusan Akuntansi, Universitas Padjajaran Bandung.

He has been a member of Bakrieland's Audit Committee since 2007. Experienced in public accountant practices for more than 30 years. Former Managing Partner and Chairman of KPMG Indonesia and former Senior Partner in Kanaka Puradiredja, Robert Yogi, Suhartono Public Accounting Firm. Currently, he is also the Chairman of Honorary Board of Indonesian Institute of Accountants and Chairman of Executive Boards of Indonesian Institute of Audit Committee. Former member of Executive Board of International Transparency and a member or former member of audit committee in various public listed companies. Graduated from the Faculty of Economics majoring in Accounting Universitas Padjajaran, Bandung.



Haryadi
Anggota
Member

Lahir di Pekanbaru, Riau, 29 April 1966. Beliau menjabat sebagai anggota Komite Audit Bakrieland sejak 2002. Saat ini beliau juga menjabat sebagai Direktur Keuangan di PT Gear Capital. Sebelumnya beliau pernah menjabat sebagai Direktur Keuangan di PT Carana Bungapersada, dan Komisaris di beberapa perusahaan, antara lain PT Pari Mukti, PT Arena Taman Rasuna dan PT Iguana Imaji Media. Beliau meraih gelar Sarjana dari Sekolah Tinggi Ilmu Ekonomi Indonesia pada tahun 1992.

Born in Pekanbaru, Riau, 20 April 1966. He has been a member of Bakrieland's Audit Committee since 2002. Currently he serves as Finance Director of PT Gear Capital. Previously he was the Finance Director of PT Carana Bungapersada, and Commissioner in several companies such as PT Pari Mukti, PT Arena Taman Rasuna and PT Iguana Imaji Media. He holds a Sarjana degree from Sekolah Tinggi Ilmu Ekonomi Indonesia in 1992.

komite remunerasi & nominasi

remuneration & nomination committee



Bambang Irawan
Ketua
Chairman

Catatan: Keterangan CV dapat dilihat di halaman 108
Note: CV can be seen on page 108



Lukman Purnomosidi
Anggota
Member

Catatan: Keterangan CV dapat dilihat di halaman 108
Note: CV can be seen on page 108



Edgardo Bautista
Anggota
Member

Catatan: Keterangan CV dapat dilihat di halaman 109
Note: CV can be seen on page 109



Supartono
Anggota
Member

Catatan: Keterangan CV dapat dilihat di halaman 109
Note: CV can be seen on page 109

komite pemantau risiko

risk monitoring committee



Lukman Purnomosidi
Ketua
Chairman

Catatan: Keterangan CV dapat dilihat di halaman 108
Note: CV can be seen on page 108



Supartono
Anggota
Member

Catatan: Keterangan CV dapat dilihat di halaman 109
Note: CV can be seen on page 109

senior manajemen

senior management



Perusahaan Induk | Holding Company

Berdiri, kiri ke kanan | Standing, left to right

Erry Zulamri Djaelani
(Risk Management Div. Head)

A. Amri Aswono Putro
(Corporate Finance Div. Head)

Ferdinand Sadeli
(Chief Financial Officer)

Jordan Lubis
(Internal Audit Div. Head)

Nuziman Nurdin
(Corporate Secretary)

Duduk, kiri ke kanan | Seated, left to right

Santoso Budi
(Legal Div. Head)

Caroline M. Gunawan
(Financial & Capital Market Dept. Head)

Wimbo Sasongko
(HRD Div. Head)



City Property

Berdiri, kiri ke kanan | Standing, left to right

Wawan D. Guratno
(Chief Business Development Officer)

Ferry Supandji
(Chief Marketing Officer)

Duduk, kiri ke kanan | Seated, left to right

Dicky Setiawan
(Chief Operational Officer)

Fandrizar
(Chief Financial Officer)

senior manajemen

senior management



Landed Residential

Kiri ke kanan | Left to right

Jo Eddy Respati
(Chief Marketing Officer)

Darsono
(Chief Financial Officer)

Henry Harmen
(Chief Business Development Officer)

Muchsin Mulahela
(Chief Estate Mgt. Officer)



Hotel and Resort

Kiri ke kanan | Left to right

Yudha Muchty Zain
(Chief Financial Officer)

Kiki Simandjuntak
(Chief Business Development Officer)

Seno Andhikawanto
(Chief Marketing Officer)

produk & layanan

products & services

City Property

- **Rasuna Epicentrum (PT Bakrie Swasakti Utama):**
 - a. Aston Rasuna Hotel & Residence
 - b. The 18th Residence Taman Rasuna
 - c. Rasuna Office Park
 - d. Pasar Festival
 - e. Gold's Gym Elite Rasuna
 - f. The Grove Condominium
 - g. The Grove Suites
 - h. The Wave at Rasuna Epicentrum
 - i. Bakrie Tower
 - j. Epicentrum Walk - Lifestyle & Entertainment Center
 - k. Concert Hall & Office Tower
 - l. The Convergence Indonesia
- **Wisma Bakrie 1 dan Wisma Bakrie 2**

Landed Residential

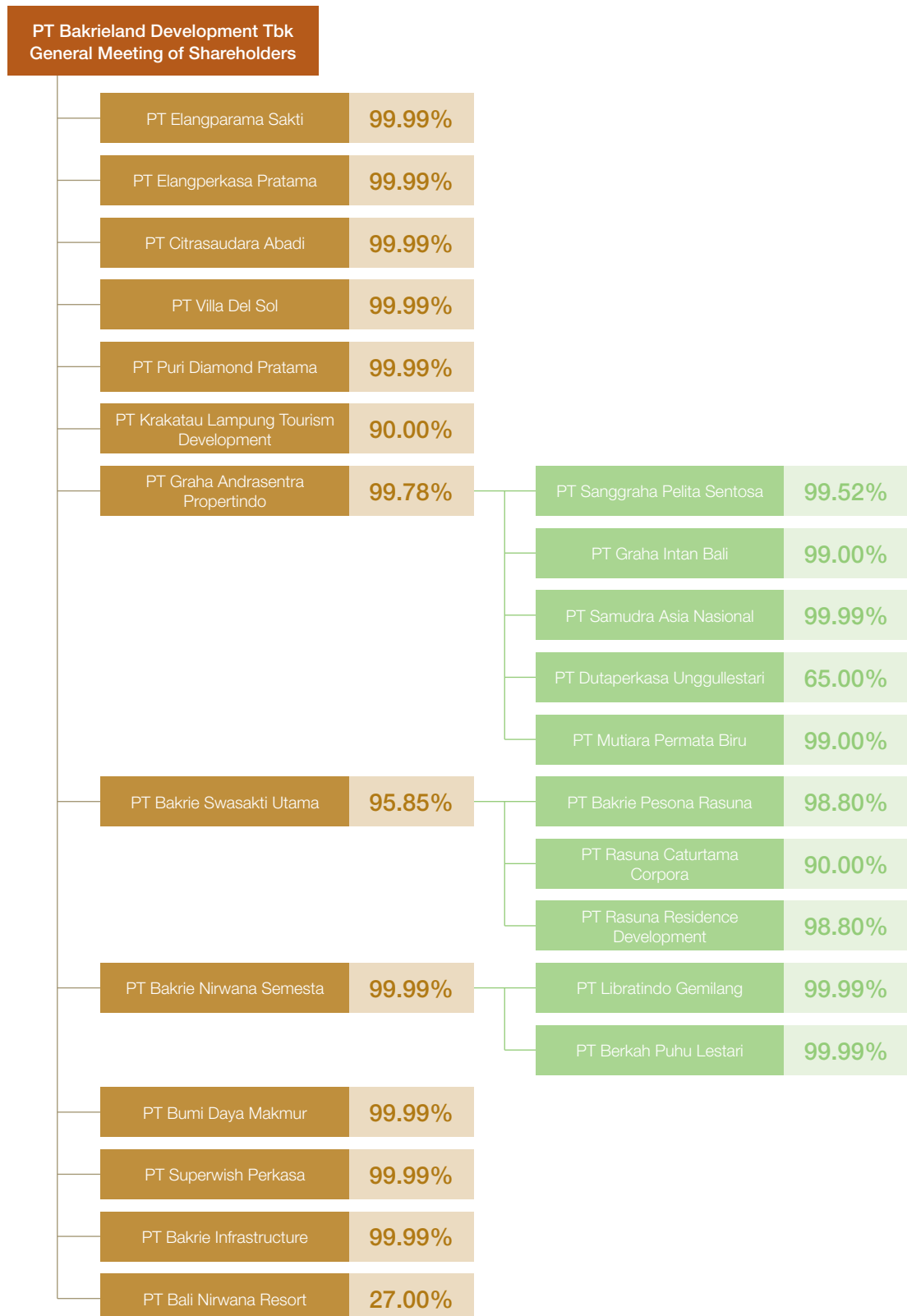
- **Bogor Nirwana Residence (PT Graha Andrasentra Propertindo):**
 - a. Cluster Tirta Nirwana
 - b. Cluster Arga Nirwana
 - c. Cluster Padma Nirwana
 - d. Cluster The Panorama
 - e. Nirwana Epicentrum (The Jungle Water Adventure)
- **Graha Taman Kebayoran dan Graha Taman Sukabumi (PT Sanggraha Pelita Sentosa)**
- **Batam Nirwana Residence (PT Permata Mutiara Biru)**
- **Ijen Nirwana Residence (PT Duta Perkasa Unggullestari)**

Hotel & Resort

- **Legian Nirwana Suites (PT Samudra Asia Nasional)**
- **Krakatoa Nirwana Resort (PT Krakatau Lampung Tourism Development)**
- **Balikpapan Nirwana Suites & Residences (PT Libratindo Gemilang)**
- **Ubud Nirwana Villas (PT Berkah Puhu Lestari)**
- **Nirwana Bali Resort (PT Bali Nirwana Resort)**

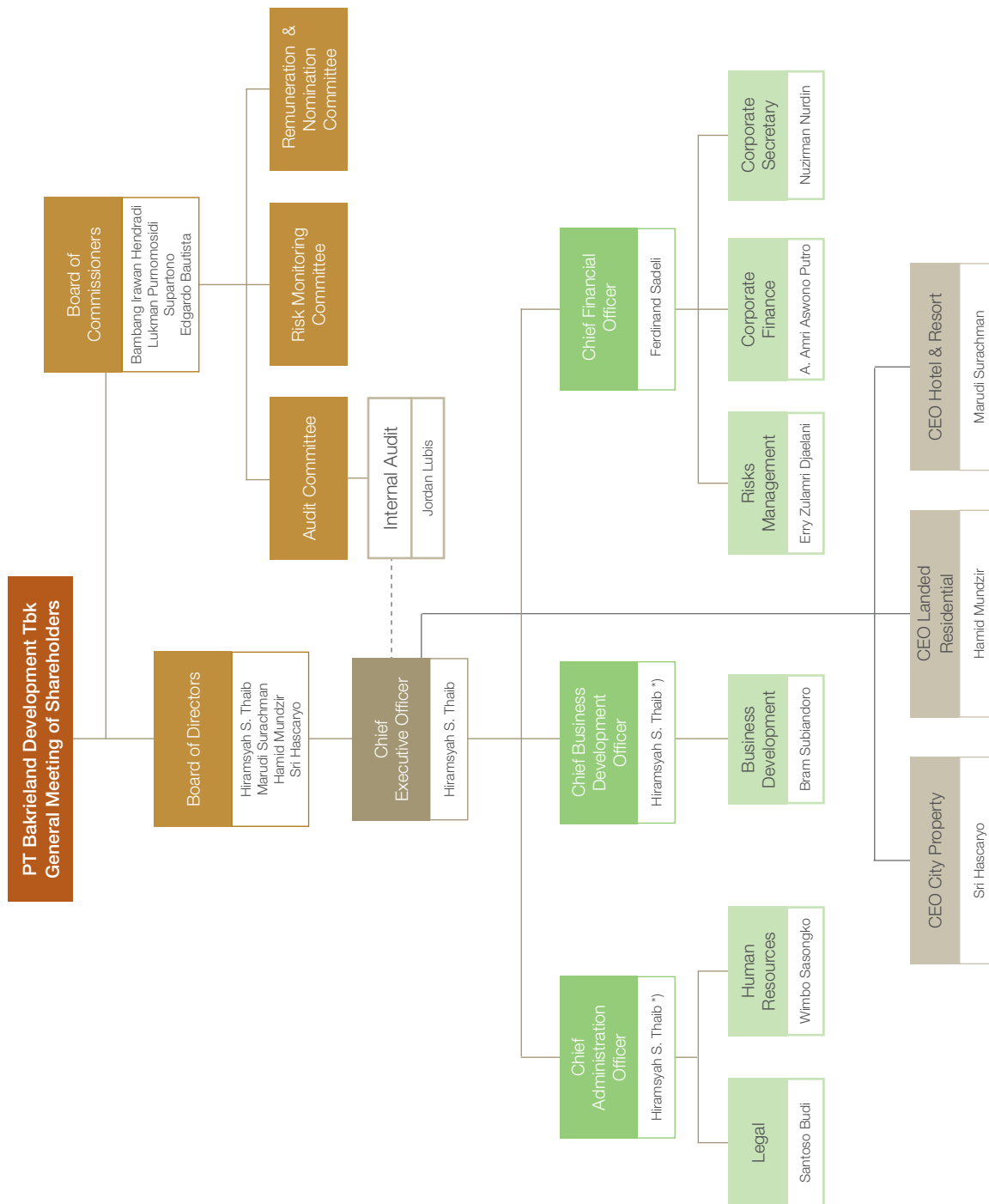
struktur perusahaan

corporate structure



struktur organisasi

organization structure



Legend: *) merangkap | concurrently

surat pernyataan dewan komisaris dan direksi board of commissioners and directors' statement

Yang bertandatangan di bawah ini telah membaca dan memeriksa dengan seksama serta menyetujui isi dari naskah Buku Laporan Tahunan Perusahaan tahun 2007 terlampir, yang didalamnya juga memuat Laporan Keuangan Perusahaan untuk tahun buku 2007.

The undersigned have read and duly examined and approved the Annual Report of the Company for the year 2007, which includes the Financial Statement for the year 2007.

Dewan Komisaris Board of Commissioners



Bambang Irawan Hendradi
Presiden Komisaris
President Commissioner



Lukman Purnomosidi
Komisaris Independen
Independent Commissioner



Supartono
Komisaris
Commissioner



Edgardo Bautista
Komisaris
Commissioner

Direksi Board of Directors



Hiramshyah Sambudhy Thaib
Presiden Direktur & CEO
President Director & CEO



Marudi Surachman
Direktur
Director



Hamid Mundzir
Direktur
Director



Sri Hascaryo
Direktur
Director

nama & alamat anak perusahaan

name & addresses of subsidiaries

PT ELANGPARAMA SAKTI

Wisma Bakrie 1, Floor 6
Jl. HR. Rasuna Said Kav. B-1 Jakarta 12920
Tel. (62-21) 5257835
Fax. (62-21) 5225063

PT ELANGPERKASA PRATAMA

Wisma Bakrie 1, Floor 6
Jl. HR. Rasuna Said Kav. B-1 Jakarta 12920
Tel. (62-21) 5257835
Fax. (62-21) 5225063

PT VILLA DEL SOL

Wisma Bakrie 1, Floor 6
Jl. HR. Rasuna Said Kav. B-1 Jakarta 12920
Tel. (62-21) 5257835
Fax. (62-21) 5225063

PT PURI DIAMOND PRATAMA

Wisma Bakrie 1, Floor 6
Jl. HR. Rasuna Said Kav. B-1 Jakarta 12920
Tel. (62-21) 5257835
Fax. (62-21) 5225063

PT SUPERWISH PERKASA

Wisma Bakrie 1, Floor 6
Jl. HR. Rasuna Said Kav. B-1 Jakarta 12920
Tel. (62-21) 5257835
Fax. (62-21) 5225063

PT BUMI DAYA MAKMUR

Wisma Bakrie 1, Floor 6
Jl. HR. Rasuna Said Kav. B-1 Jakarta 12920
Tel. (62-21) 5257835
Fax. (62-21) 5225063

PT BAKRIE SWASAKTI UTAMA

Jl. HR. Rasuna Said - Jakarta 12960
Tel. (62-21) 8305011
Fax. (62-21) 8305012

PT RASUNA CATURTAMA CORPORA

Jl. HR. Rasuna Said - Jakarta 12960
Tel. (62-21) 9393939

PT BAKRIE PESONA RASUNA

Jl. HR. Rasuna Said Kav. C-22
Jakarta
Tel. (62-21) 5263212
Fax. (62-21) 5263144

PT RASUNA RESIDENCE DEVELOPMENT

Jl. HR. Rasuna Said - Jakarta 12960
Tel. (62-21) 9391000
Fax. (62-21) 83786244

PT GRAHA ANDRASENTRA PROPERTINDO

Jl. Dreded – Pahlawan
Bogor – Jawa Barat 16132
Tel. (62-251) 211290
Fax. (62-251) 211295

PT SANGGRAHA PELITA SENTOSA

Jl. Setia Mekar Raya – Bekasi Timur
Tel. (62-21) 8811685
Fax. (62-21) 8813210

Jl. Bhineka Karya
Gunung Puyuh – Sukabumi, Jawa Barat
Tel. (62-266) 6250695
Fax. (62-266) 6250696

PT DUTAPERKASA UNGGUL LESTARI

Jl. Ijen No. 63 Klojen
Malang - Jawa Timur
Tel. (62-341) 566041
Fax. (62-341) 555877

PT MUTIARA PERMATA BIRU

Jl. Patam Lestari
Sekupang – Batam
Tel. (62-778) 7081900
Fax. (62-778) 327398

PT CITRASAUDARA ABADI

Jl. Raya Mauk Km. 5
Tangerang – Banten
Tel. (62-21) 5583 959
Fax. (62-21) 5583959

PT BAKRIE NIRWANA SEMESTA

Wisma Bakrie 1, Floor 6
Jl. HR. Rasuna Said Kav. B-1 Jakarta 12920
Tel. (62-21) 5255067
Fax. (62-21) 5256068

PT SAMUDRA ASIA NASIONAL

Jl. Melasti No. 1
Legian – Kuta Bali
Tel. (62-361) 751770
Fax. (62-361) 753067

**PT KRAKATAU LAMPUNG TOURISM
DEVELOPMENT**

Jl. Trans Sumatra Km. 45
Desa Merak Belatung – Kalianda 35551
Tel. (62-727) 322888
Fax. (62-727) 322402

PT GRAHA INTAN BALI

Wisma Bakrie 1, Floor 6
Jl. HR. Rasuna Said Kav. B-1 Jakarta 12920
Tel. (62-21) 2525067
Fax. (62-21) 2525068

PT BERKAH PUHU LESTARI

Desa Puhu Payangan
Kabupaten Gianyar - Bali

PT LIBRATINDO GEMILANG

Jl. Marsma Iswahjudi
Sepinggan – Balikpapan
Tel. (62-524) 7028907
Fax. (62-524) 764179

informasi tambahan bagi pemegang saham

additional information for shareholders

Akuntan Publik | Independent Public Accountants

Kantor Akuntan Publik Doli, Bambang,
Sudarmadji & Dadang
Jl. Raya Kalimalang Blok E No. 4F
Duren Sawit, Jakarta 13440
Tel. (62-21) 86610331
Fax. (62-21) 86610401

Biro Administrasi Efek | Share Registrar

PT Sinartama Gunita
Plaza BII Menara 3, Lantai 12
Jl. MH. Thamrin No. 51, Jakarta 10350
Tel. (62-21) 3922332
Fax. (62-21) 3923003

Saham Tercatat | Stock Listing

PT Bursa Efek Indonesia
Indonesia Stock Exchange Building Tower 1
Jl. Jend. Sudirman Kav. 52-53, Jakarta
Tel. (62-21) 5150515
Fax. (62-21) 5150330

Rapat Umum Pemegang Saham Tahunan 2008

Rabu, 28 Mei 2008
Bertempat di D'commerce Lantai 20
Wisma Bakrie 2
Jl. HR. Rasuna Said Kav. B-1, Jakarta 12920.

The 2008 Annual General Meeting of Shareholders

Wednesday, May 28, 2008
Located in D'commerce, 20th Floor
Wisma Bakrie 2
Jl. HR. Rasuna Said Kav. B-1, Jakarta 12920.

